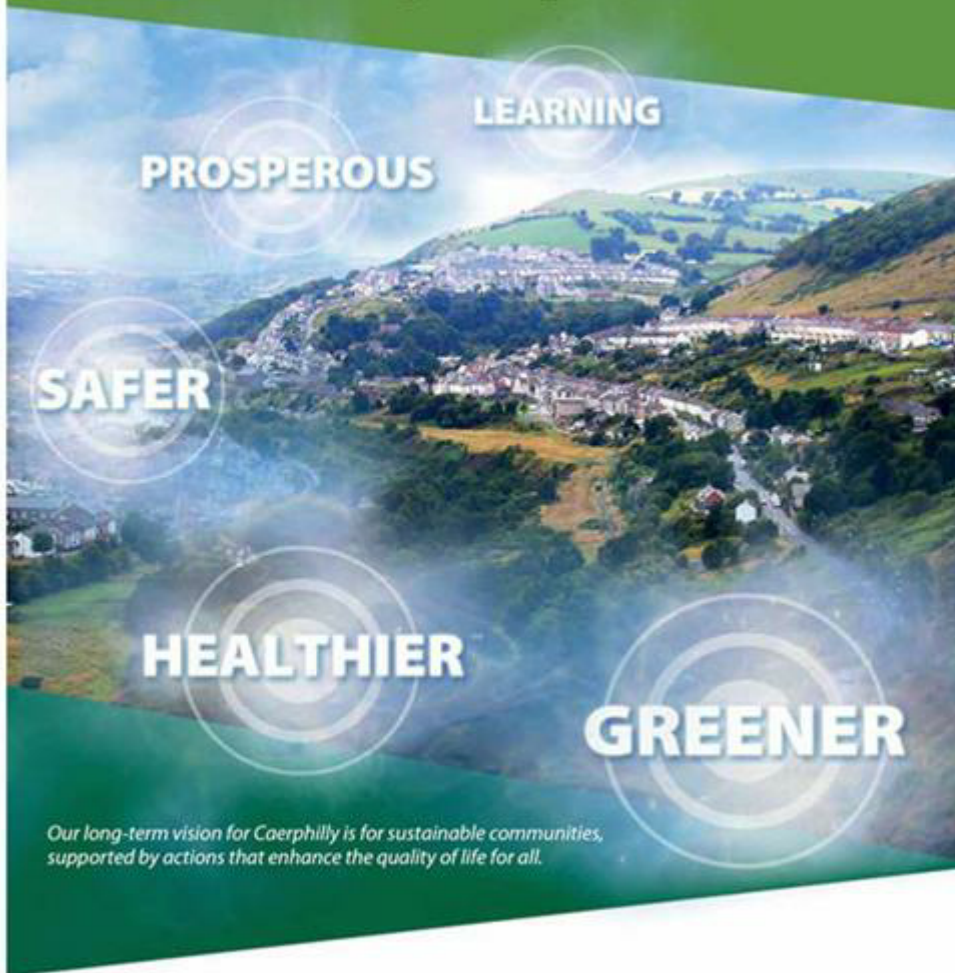


# Caerphilly Delivers

## The Single Integrated Plan 2013-2017



## GREENER CAERPHILLY

APPENDIX 3

A *Greener Caerphilly* aims to:

- Safeguard and, where necessary, enhance the living environment in the Caerphilly county borough for its own sake
- Secure quality of life for local people and visitors now and in the future.

Based on the findings from the Caerphilly LSB UNA, the Single Integrated Plan development days, and the work of the Living Environment Partnership, three priority areas for working towards a Greener Caerphilly have been identified; these are:



**G1** Improve local environmental quality.



**G2** Reduce the causes and adapt to the effects of climate change.

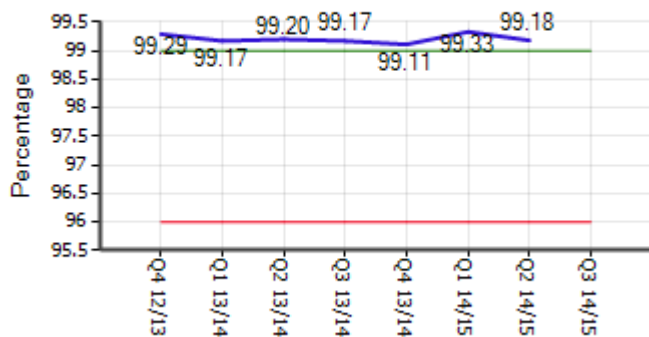


**G3** Maximise the use of the environment for health benefits.



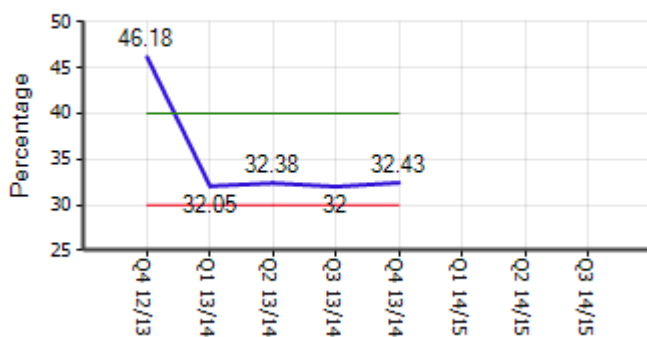
## Priority G1: Improve local environmental quality

STS006 The percentage of reported fly tipping incidents cleared within 5 working days



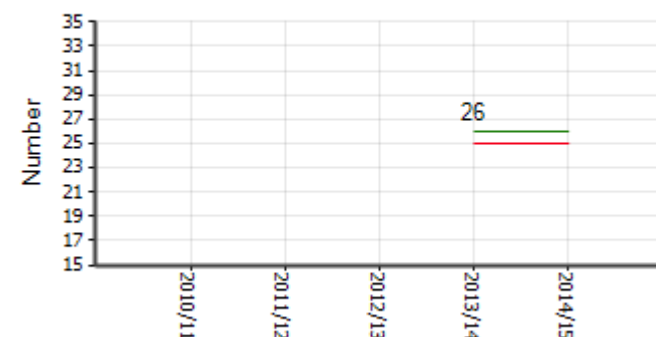
Period	Comment
Q3 14/15	

STS007 The percentage of reported fly tipping incidents which lead to enforcement activity



Period	Comment

No of the 26 priority Local Biodiversity Action Plan (BAP) species remaining stable or improving



Period	Comment
2014/15	26 animal and plant species were surveyed at selected sites across the county borough in 2013/14. This was the first year of monitoring for these species, so will form the base line of data on which to assess population change in future years. In order to take account of natural fluctuations, assessments on change will be made after 4 years of data have been gathered.



## Priority G1: Improve local environmental quality

### Fly Tipping - Priority Action

Period	Title	Comment	RAG	Overall Status	Progress Status	% Complete
Q3 14/15	Actively seek to prosecute those caught fly-tipping, and publicise prosecutions and the penalties imposed on those caught fly-tipping.	Partners continue to actively seek to prosecute those caught fly-tipping.  Fly-tipping Wales have provided 8 covert cameras for partners to use at fly-tipping hotspots.	⊖	In Progress	On Track	35
Q3 14/15	Ensure better sharing of intelligence between partners.	Enforcement working group meetings continue to be held with partners across S Wales.  Fly-tipping Action Wales has produced an e-learning package on intelligence awareness which accessible via the partners page of their website	⊖	In Progress	On Track	25
Q3 14/15	Ensure the fast and effective clean-up of fly-tipping when it occurs.	Caerphilly County Borough Council continues to respond quickly to reported fly-tipping, and were ranked 3rd in Wales for the speed of response in 2013/14.  Data on response rates is collated on a 6-monthly basis, for the first 2 quarters of 2014/15, 99.18% of incidents were cleaned up within 5 working days.	⊖	In Progress	On Track	35
Q3 14/15	Improve the GPS fly-tipping mapping system.	Fly-tipping Action Wales are trialling the new improved GPS Flymapper system. This is a web based system which shows incidents (with photograph) on a digital map.	⊖	In Progress	On Track	35
Q3 14/15	Provide an education and information programme to make people aware of where and how waste can be legally disposed of, and of the damage that fly-tipping causes	Partners took part in a "Take Pride in Your Community" programme to encourage greater awareness of fly-tipping.  Fly-Tipping Wales have provided Duty of Care advice to social housing officers and private landlords.	⊖	In Progress	On Track	40
Q3 14/15	Work to ensure harsher penalties for those convicted of fly-tipping.	The consultation on Strengthening Enforcement Authorities Powers to Seize Vehicles for Certain Waste Offences launched on 15th December 2014.  The aim is to help enforcement authorities prevent illegal waste activities more effectively than at present. This will reduce the impact of waste crime on the environment, while helping to bring about a level playing field for the legitimate waste industry and encouraging growth through investment	⊖	In Progress	Ahead	50



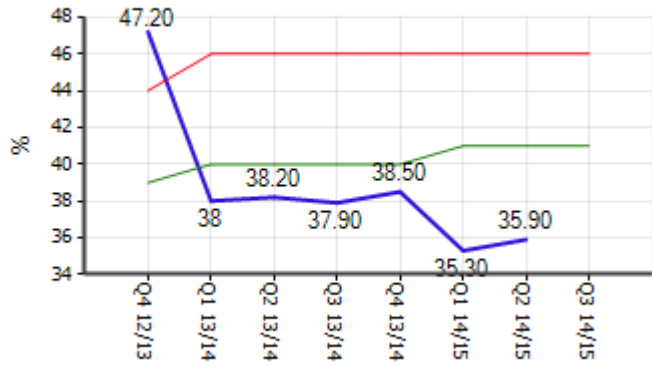
## Priority G1: Improve local environmental quality

### Biodiversity - Priority Action

Period	Title	Comment	RAG	Overall Status	Progress Status	% Complete
Q3 14/15	Engage with land owners of sites of high wildlife value to encourage sympathetic management.	Go Wild is held in Caerphilly every other year with the alternate year being held in Blaenau Gwent. This year the event was held in Blaenau Gwent at Bryn Bach Park on the 24th June and the Caerphilly Biodiversity Partnership attended and carried out activities with members of the public to encourage pollinators	⊖	In Progress	On Track	50
Q3 14/15	Monitor key indicator species and habitats to ensure biodiversity within the county borough is stable or increasing.	Monitoring of river fly has continued on the Rhymney River and data passed to the Riverfly Partnership Coordinator. Monitoring of indicator species has continued during the autumn of 2014. Information has yet to be collated.	⊖	In Progress	On Track	35
Q3 14/15	Raise awareness of biodiversity to members of the public via key events such as Go Wild and the Big Cheese.	Go Wild is held in Caerphilly every other year with the alternate year being held in Blaenau Gwent. This year the event was held in Blaenau Gwent at Bryn Bach Park on the 24th June and the Caerphilly Biodiversity Partnership attended and carried out activities with members of the public to encourage pollinators	⊖	In Progress	On Track	35
Q3 14/15	Review Biodiversity Action Plan targets to ensure actions are relevant and achievable.	Further review of the action plan has been delayed due to loss of staff. Progress will be continued when staff resources allow	⊖	In Progress	Behind	20
Q3 14/15	Work with partners to control and reduce priority invasive species in the county borough	A significant amount of work was undertaken in quarter 3 to control invasive species. The Greener Caerphilly supported project to spray and control Giant Hogweed was completed with several new sites identified and sprayed. Work to control Japanese Knotweed continued.	⊖	In Progress	On Track	40
Q3 14/15	Work with partners to report incidence of pollution in our streams and rivers.	Groundwork has removed a number of barriers to fish migration on the River Sirhowy, Rhymney and Nant Bargoed and has secured funding to continue until 2017.  Monitoring of river fly has continued on the Rhymney River and data passed to the Riverfly Partnership Coordinator.	⊖	In Progress	On Track	35
Q3 14/15	Work with partners to secure funding and grant support for biodiversity projects in the county borough	Groundwork with the support of other partners submitted a Nature Fund application for Healthy Valleys Rivers. This was unfortunately unsuccessful, but Groundwork's NRW Competitive fund application 'Healthy Rivers' was successful. Caerphilly CBC has secured a South Wales non-native invasive species programme through NRW's Competitive Fund.  The Upland Project and Pollinator Project were successful bids and action to deliver projects are underway, with a completion date of June 2015.	⊖	In Progress	On Track	25

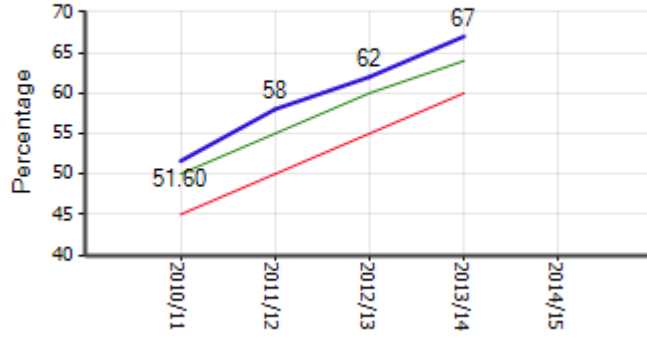
 **Priority G2: Reduce the causes of and adapt to the effects of climate change**

WMT004 The percentage of municipal waste sent to landfill



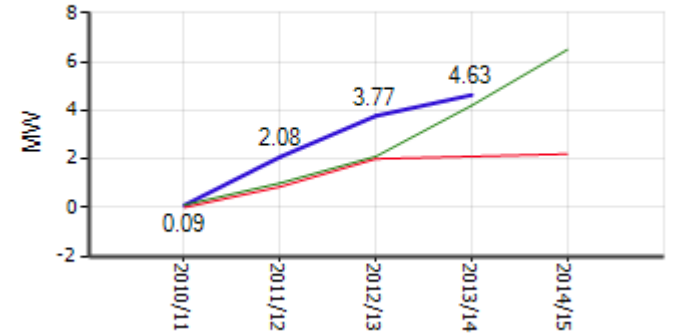
Period	Comment
Q3 14/15	

% of schools with the highest (green flag) award under the Eco Schools programme as at 31st March



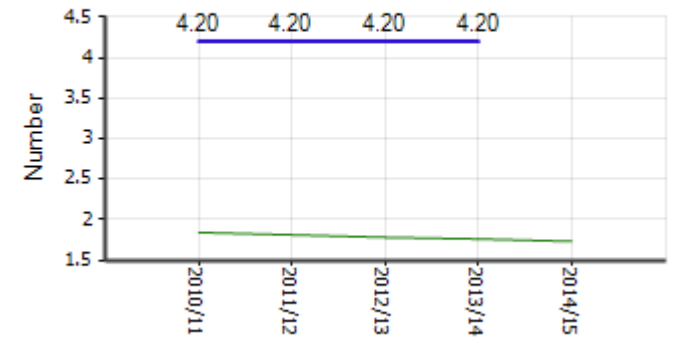
Period	Comment

The amount of energy generated (MW) from renewable sources in the county borough as at 31st March



Period	Comment
2014/15	Generating energy, both heat or electricity, from fossil fuels releases green house gases, which contribute to global warming and climate change. Energy generated from renewable sources such as wind, water and the sun does not generate green house gases and therefore does not contribute to climate change. Our aim is therefore firstly to reduce the amount of energy that we use, and secondly to increase the percentage of our energy generated from renewable sources.

The average ecological footprint of a resident in the borough



Period	Comment
2014/15	



## Priority G2: Reduce the causes of and adapt to the effects of climate change

### Waste/Recycling - Priority Action

Period	Title	Comment	RAG	Overall Status	Progress Status	% Complete
Q3 14/15	Increase the number of Recycle on the Go! facilities.	Additional Recycle on the Go sites are being identified to increase the numbers of facilities available.	⊖	In Progress	On Track	40
Q3 14/15	Increase the uptake of food waste recycling projects.	CCBC continues to provide food waste recycling service to schools and the authority's main office complexes. This is helping us to enhance more biodegradable waste from landfill and in turn meet the recycling targets.	⊖	In Progress	On Track	30
Q3 14/15	Promote home composting.	Partners continuing to provide the subsidised sales service on home composters for the public and in turn help minimise waste and make use of valuable biodegradable materials.	⊖	In Progress	On Track	30
Q3 14/15	Work in partnership to raise awareness of waste issues through a programme of events, campaigns and projects.	<p>Partners are continuing to deliver awareness raising events across the County Borough to raise awareness of the waste mountain and the importance of reusing and recycling more.</p> <p>Additional funding has recently been secured to roll out a schools educational campaign.</p> <p>The Furniture Revival now offers a 'Community Repaint' service which collects reusable, leftover paint and re-distribute it to individuals, families, communities and charities in need.</p>	⊖	In Progress	On Track	35



## Priority G2: Reduce the causes of and adapt to the effects of climate change

### Eco Schools - Priority Action

Period	Title	Comment	RAG	Overall Status	Progress Status	% Complete
Q3 14/15	Develop and provide sustainable development advice to assist teachers including curriculum links and lesson plans.	<p>An outdoors training event on using the environment for literacy and numeracy work was held in October, delivered by Natural Resources Wales. This was funded by the CEQ small grant fund administered by the Greener Caerphilly partnership.</p> <p>an ESDGC Literacy and Numeracy Framework teacher resource pack has been developed for year 2, year 6 and year 9, as a partnership project with the All Wales LA ESDGC Officer Group. These have been sent out to all schools in the CCB.</p>	⊖	In Progress	On Track	40
Q3 14/15	Provide specific technical support on sustainable development issues to head teachers, teachers and school governors.	<p>The Caerphilly Solar Schools project is now complete. 16 schools and 1 education centre have received solar PV installations.</p> <p>A new 'Sustainable Caerphilly' website, with a specific section for schools on ESDGC has been developed.</p>	⊖	In Progress	Ahead	45
Q3 14/15	Support schools to enable them to achieve awards under the Eco Schools programme.	<p>64 schools (71%) have achieved an Eco School Green Flag award (15 schools – 1st flag, 10 schools-2nd flag, 24 schools – 3rd flag and 14 schools – 4th flag (Platinum award)).</p> <p>Three Eco School training sessions held for 26 schools, covering the Eco School process and the Platinum Award.</p> <p>Eco School support visits made to 8 schools to help them progress through the eco school award scheme.</p>	⊖	In Progress	Ahead	40



## Priority G2: Reduce the causes of and adapt to the effects of climate change

### Renewable Energy - Priority Action

Period	Title	Comment	RAG	Overall Status	Progress Status	% Complete
Q3 14/15	Develop two wind turbines in Oakdale Business Park with a total generating capacity of 5MW.	The installation of the 2 turbines was undertaken in December 2013, with commissioning undertaken in February 2014. This action is now complete.	+	Complete	Ahead	100
Q3 14/15	Provide information and support to business and residents on renewable energy sources, options and funding.	Partners continue to support businesses and residents. The Councils Sustainable Energy Officers plus the Energy Saving Trust and Carbon Trust are actively engaged in the county borough. The Green Doctors programme has provided support and advice to community groups. This 4 year programme was completed successfully in this quarter. Housing Associations continue existing programmes to provide advice and to install renewable energy technology in their properties. In the third quarter of 2014/15, ninety-two new photovoltaic (PV) systems were installed in the county borough bringing the total to 1,834. One new wind turbine (500kW) was installed. These new installations have increased the total capacity of renewable energy by 804kW to a total of 5.936 MW.	o	In Progress	On Track	35
Q3 14/15	Seek to secure funding to implement renewable energy projects in the county borough.	The Local Delivery Strategy for a follow-on programme for the RDP, including a sustainable energy element to work with local communities has been submitted to Welsh Government. Discussions are ongoing with utility companies to secure ECO funding for work in the county borough. Additional funding has been secured for work in Phillipstown through the Arbed scheme.	o	In Progress	On Track	25

### Ecological Footprint - Priority Action

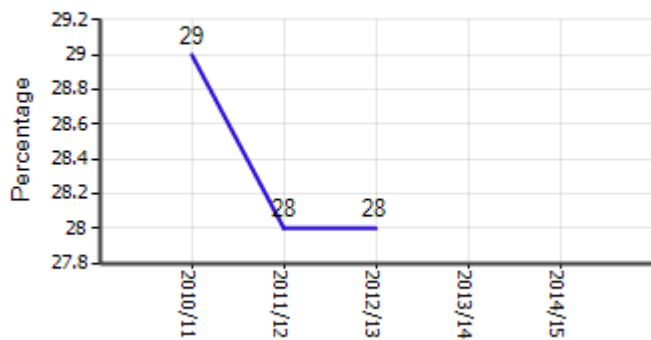
Period	Title	Comment	RAG	Overall Status	Progress Status	% Complete
Q3 14/15	Encourage individuals to calculate and understand their ecological footprint using the Sustainable Caerphilly tool.	The Council's website continues to promote the use of the on-line tool, however a reduction in staff resources means that the programme of workshops and events has been reduced.	o	In Progress	Behind	22
Q3 14/15	Raise awareness of the local and global issues of resource consumption.	Work against this action has been reduced due to a reduction in resources. The Climate Change Woodlands programme is not being run in 2014/15 due to budget constraints. Associated workshops have also been reduced.	o	In Progress	Behind	30





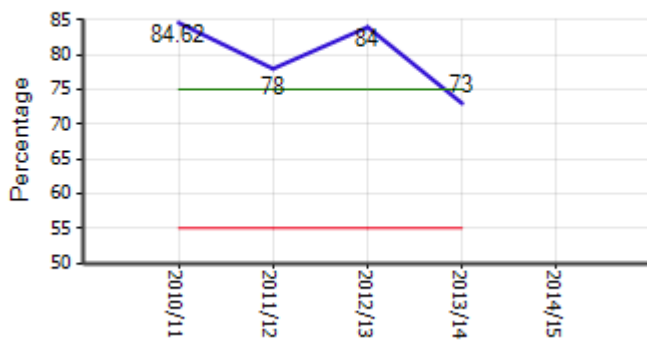
### Priority G3: Maximise the use of the environment for health benefits

Physically active on 5 or more days in the past week - Age standardised percentage of adults - Caerphilly



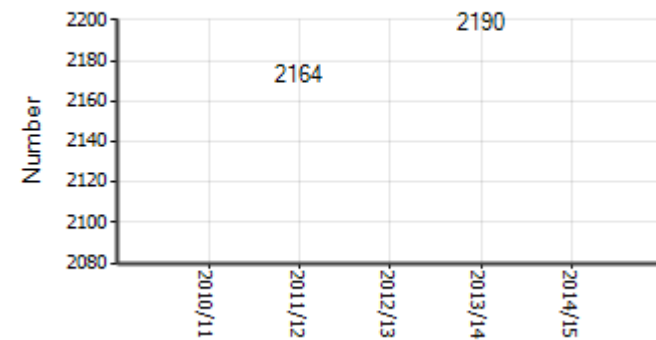
Period	Comment

% Rights Of Way which are considered easy to use by members of the public



Period	Comment

Number of allotment plots in active use (as at March each year)



Period	Comment


**Priority G3: Maximise the use of the environment for health benefits**
**Priority Action**

Title	Comment	RAG	Overall Status	Progress Status	% Complete
Develop a better measure of whether people are accessing the environment for the benefit of their health.	Groundwork's Go Green for Health programme team has been appointed, and are looking at technologies available to monitor the use of the environment for health.	⊖	In Progress	Behind	18
Increase the number of people taking part in healthy walking groups	<p>Come Outside has supported both the Penybryn Walk Group and Hafal Blackwood in participating in healthy walks throughout the borough, with walks including Dark Sky Wales Planetarium viewings and planet geocache and quiz which had 17 participants.</p> <p>Come Outside are hoping to increase walk distance and understanding / appreciation of the natural environment with Hafal. Further geocache sessions, a hawk walk and local historical walks are in the plan for the future.</p>	⊖	In Progress	On Track	40
Support and promote the use of allotments.	<p>Work continues to be undertaken with allotment associations to bring vacant plots back into use and to develop new plots.</p> <p>A new Federation has been formed to manage sites in the former Islwyn area on behalf of the Authority (Caerphilly East Allotment Federation).</p> <p>The work includes a grant scheme of £10,000 from the Authority's Community Schemes Fund for 2014/15.</p>	⊖	In Progress	On Track	35



### Priority G3: Maximise the use of the environment for health benefits

#### Priority Action

Title	Comment	RAG	Overall Status	Progress Status	% Complete
Seek to secure funding to implement projects to maximise the use of the environment for health in the county borough.	With support from partners, Groundwork's Go Green for Health programme has secured £800,000 from the BIG Lottery. The team has been appointed, the programme will begin delivery in Spring 2015.	⊖	In Progress	Ahead	30
Support the development of safe outdoor play spaces through the implementation of the Play Strategy	<p>GAVO offer support to groups that wish to develop outdoor play spaces and will assist with community consultation and the completion of funding applications.</p> <p>Work has been carried out with 3 local primary schools investigating the opportunities to develop school grounds that can be open to local communities as safe outdoor play spaces.</p> <p>Play Wales has produced toolkits for developing and managing play spaces and the use of school grounds during out of school hours.</p> <p>The work of the play strategy has now been transferred to the Play Sufficiency Action Plan.</p>	⊖	In Progress	On Track	30

## Greener Caerphilly - Exceptions Report

### 2014/15 - Qtr3 update:

For further information, please refer to the

**"Caerphilly Delivers" - Single Integrated Plan**

**Highlight & Exception Report (Dated January 2015)**

Whereby, the LSB is requested to consider and comment on any actions/performance/recommendations documented.